



ITT

Mission Planning System

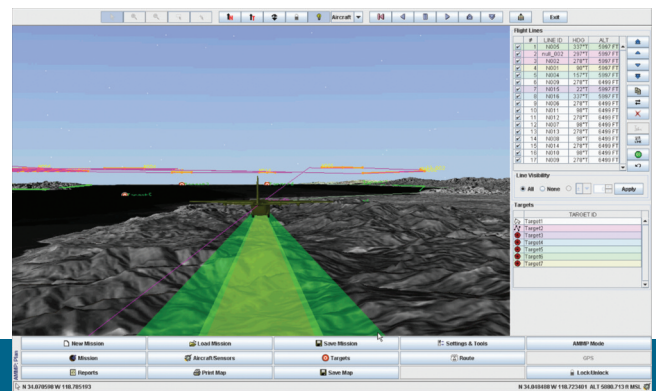
Customized Mission Planning Advanced 3-D Visualization Roll-on, Roll-off Portability

ITT's Mission Planning System is a turnkey solution flying today that enables mission planners and flight crews to minimize planning time while maximizing sensor effectiveness.

Drawing on ITT's 50 years of experience in innovative remote sensing and navigation solutions, the Mission Planning System offers a seamless interface with operational DoD Intelligence, Surveillance and Reconnaissance (ISR) collection systems.

It provides immediate ground and in-flight support, integrating sensors, platforms and battlespace variables into a clear, 3-D picture for fast, flexible decision making.

Developed using a rapid prototyping process, the Mission Planning System augments internally focused, existing sensor planning software. It can be adapted to meet specific customer requirements while retaining a standardized modeling environment. Its ready-to-use, operational products are compatible with a wide range of disparate sensors, GPS units, navigation equipment, and other military and commercial mission planning tools, such as FalconView and Jeppesen.



By leveraging Analytical Graphics, Inc. 4DX (STK Engine) Satellite custom developed user-oriented interfaces, the ITT Mission Planning System provides 3-D visualizations that deliver immediate customer impact.

Key Features

- The Mission Planning System is a low-cost turnkey solution that enhances efficiencies and integrates mission data.
- With roll-on, roll-off portability and a flexible “plug-and-play” architecture, the Mission Planning System is up and running fast – anywhere, anytime.
- Open architecture provides easily customizable capabilities and smooth integration into current operational systems.
- Personalized workflows conform to your processes so you don't have to change the way you work.

Engineered for life

Mission Planning System

The Mission Planning System combines and streamlines incongruent and independent ISR planning processes and mission data to save valuable planning time, improve sensor performance, maximize resources and leverage your investment. A dynamic product, the Mission Planning System expands to meet new requirements, sensor hardware and mission variables as they arise.

Operational impact:

- **Turn-key Operation** – Mission Planning System is a complete solution that runs on MIL-STD 810F compliant ruggedized laptops and integrates additional high-quality components.
- **Customized User Workflows** – ITT listens carefully to user requirements. As a result, our customized, user-defined workflows target specific user processes and allow seamless transition of data across independent systems, drastically reducing mission planning cycles.
- **Flight Preview and Playback Capability** – Taking flight briefing to the next level, the Mission Planning System allows flight crew and mission planners to visualize their collection environment prior to flight in a realistic 3-D environment. Additionally, planned missions can be instantly compared with actual collections in an easily shared format.

Technical capabilities:

- **Automatic Waypoint Generation** – Compensating for numerous sensor, aircraft, and environmental constraints, Mission Planning System automatically creates and displays flight lines for immediate export to sensor control and aircraft navigation systems.
- **3-D Visualization Environment** – Using AGI's 4DX (STK Engine), Mission Planning System provides a realistic view of the collection environment, including accurate terrain models, imagery, and aeronautical charts and information.
- **Sensor Coverage Analysis and Display** – The STK modeling environment continuously computes and projects sensor coverage and access for immediate use in planning algorithms and control systems.
- **Multivariable Optimization Computations** – Mission Planning System contains a robust optimization engine that can be used to automate the route generation process at the lowest cost to the user, whether defined by time, fuel or performance.

ITT Mission Planning System Team

Marie Kennedy
Growth Manager

Barret Bryant
Program Manager

Adam Krause
Senior Systems Engineer

ITT provides a full range of innovative remote sensing and navigation solutions. Learn more at www.ssd.itt.com

For further information, contact:

ITT Corporation
Space Systems Division
1447 St. Paul Street
Rochester, New York 14606
585-269-5447
adam.krause@itt.com



Engineered for life